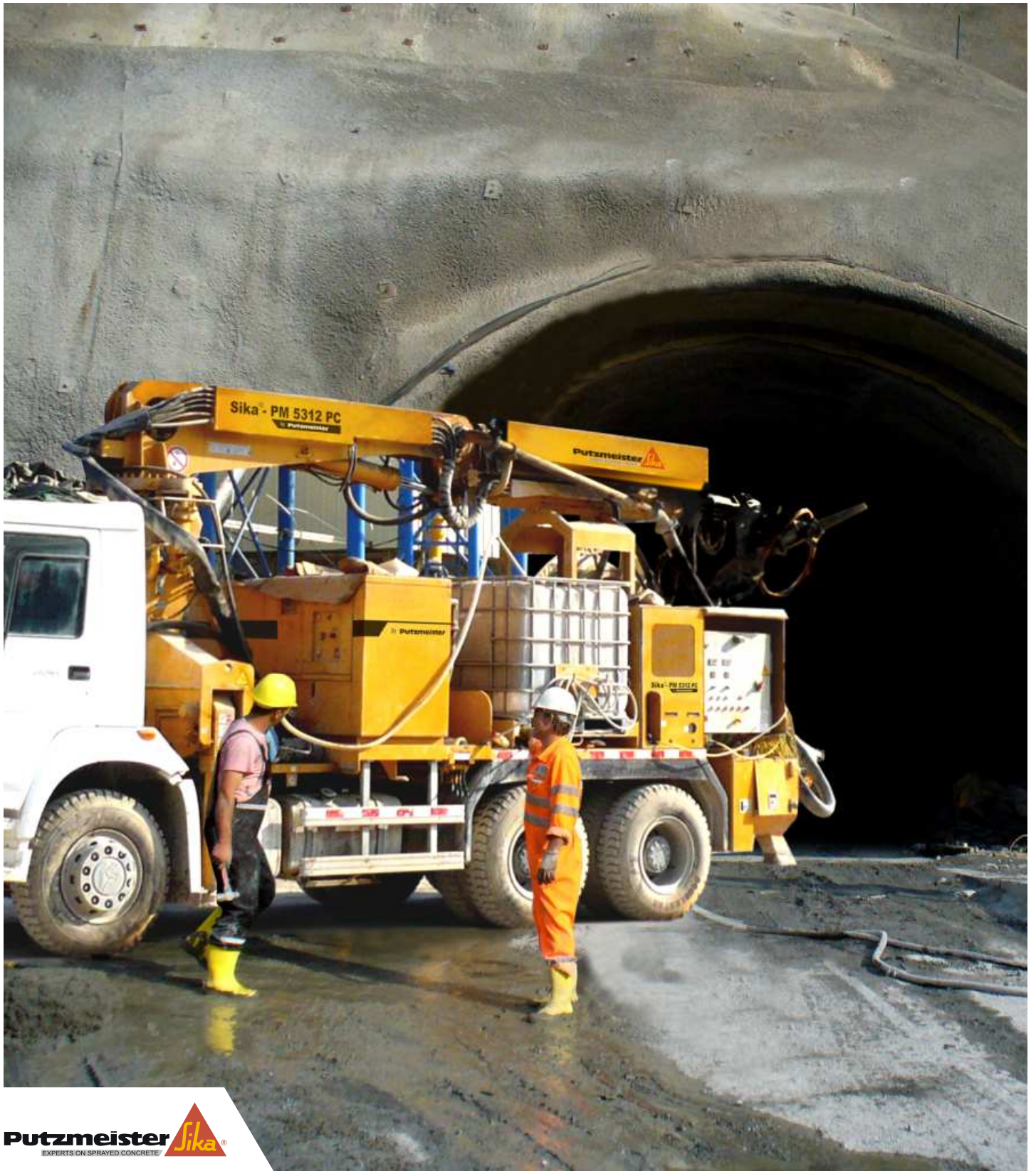


# Sika® - PM 5312

Compact Concrete Spraying Equipment  
Increased Mobility and Flexibility

**Putzmeister**

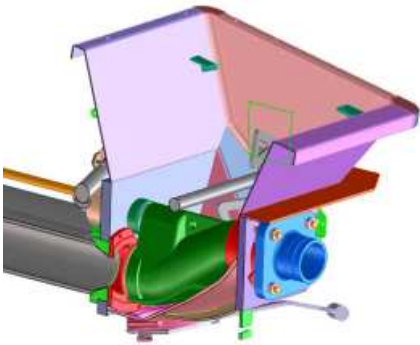


## Mobile and flexible concrete spraying equipment

Sika® - PM 5312 is a flexible, mobile and economic solution for shotcreting in medium and large tunnel sections and for the stabilization of slopes. The machine is designed to be mounted on a truck with two or three axes, which endows it with a higher degree of versatility and mobility. It is a very compact piece of equipment, and its design allows the user great accessibility to the components, which makes it easy to maintain.



Specially designed hopper with agitator and vibrator grill for shotcrete operation with steel / polymer fibres.



## Mobility

The machine has a very high degree of mobility, as it is mounted on a standard truck and can therefore be moved conveniently between different construction sites on the road. This mobility makes it a smart and economic solution for tunnel projects with various accesses. Due to its easy transportation, the Sika® - PM 5312 does the job wherever it is needed.

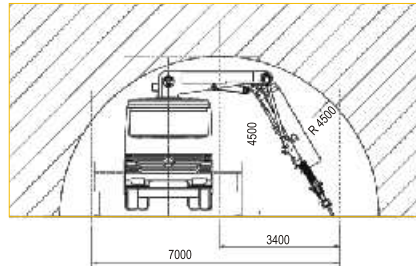
## Flexibility

Sika® - PM 5312 is flexible as far as the type of truck is concerned. The client has the possibility to use its own truck or obtain the model he prefers (in accordance with predetermined measures and specifications). Apart from the truck, the customer can also integrate other components in the machine which he already has at his disposal, for example the compressor, the liquid additive pump or the cable reel.

## Major characteristics

- Extremely robust and compact design, purpose-built for the rough working conditions of tunnelling
- Control unit is particularly reliable and easy to handle
- Very good accessibility for maintenance
- Concrete pump BSA 1003 with long maintenance levels
- Spraying arm PM SA 12.6 with maximum vertical reach of 14 m
- Halogen working lights
- Remote control Ergonic 25 m cable

	Spraying	Unfold
Max. Reach		Min. Section
Vertical	14 m	4,5 m
Horizontal	14 m	7 m



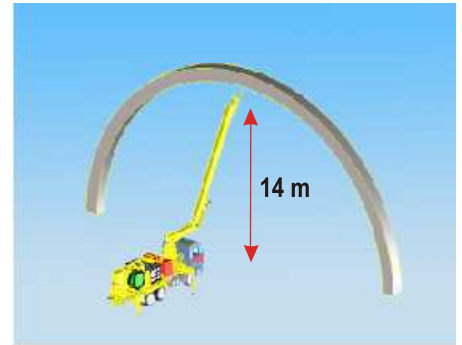
## Optional equipment

The available optional package is designed to adapt the equipment to the most diverse and particular working conditions upon request

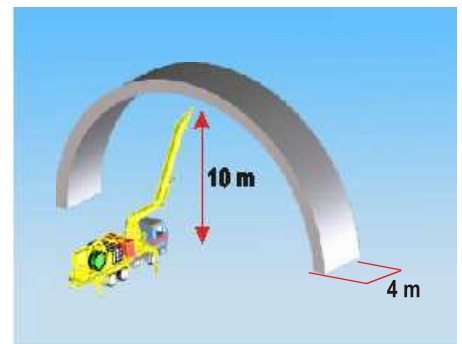
- Compressor PM 56
- Cable reel with 1400 mm diameter
- High pressure water pump
- Additional water / additive tank: 1.000 l

## Compressor PM 56 (Optional)

Power supply voltage	400 V	440 V
Power supply frequency	50 Hz	60 Hz
Working pressure (manom.) (Min./Max)	3 / 7,5 Bar	3 / 7,5 Bar
Max. Air Flow	8,8 m³/min	8,8 m³/min
Engine speed	2975 r.p.m	3570 r.p.m
Engine power (continuous service)	55 kW / 75 CV	63 kW / 85 CV
Approx. Weight	1000 Kg	1000 Kg
Cooling system	AIR	AIR



High reach spraying arm to work in large tunnel sections and outer slopes.

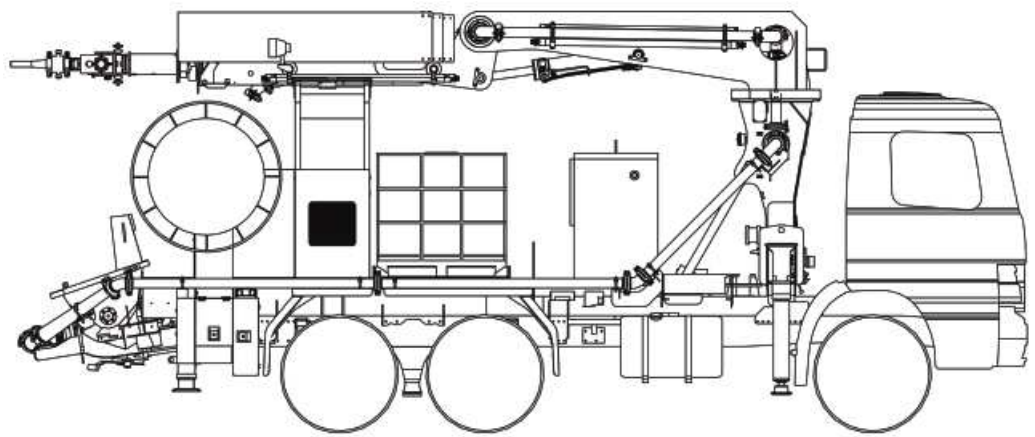


Automatic spraying arm allows an optimum maneuverability .





2480 mm



9400 mm

3950 mm

## General Data

### Dimensions (truck included)

Height*	3950 mm
Width*	2480 mm
Length*	9400 mm
<b>Max. total weight*</b>	19650 kg approx.
<b>Support distance width (front/rear) / length</b>	(3980 mm / 2765 mm / 5530 mm)

\*Dimensions calculated for Mercedes Actros 2632

## Concrete Pump BSA 1003

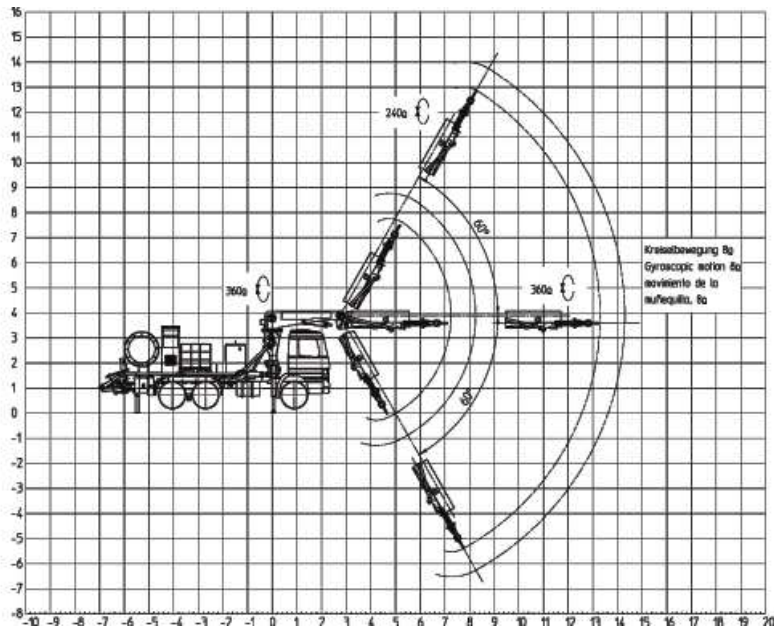
Transfer tube	S 1512
Hydraulic cylinders diameter (piston / rod / theoretical stroke length)	80 mm / 45 mm / 1000 mm
Pump revolution	1450 r.p.m
Delivery cylinder diameter	150 mm
Concrete output (min. / max.) Theoretical output	4/30 m <sup>3</sup> /h
Concrete maximal pressure	60 bar
Electric motor power	55 Kw
Hopper capacity	350 l
Hopper outlet diameter	125 mm

## Spraying boom PM SA 12.6

Maximal vertical spraying	14 m
Maximal horizontal spraying	14 m
Main arm extensions	3 (protected with covers)
Swivel range	370°
Maximal angle of the telescopic arm	+60° / -60°
Arm extension telescopic movement	6150 mm
Reduction pipe	Ø 80 mm
Spraying head rotation	360°
Spraying head inclination	+120° / -120°
Transversal nozzle rotation	+120° / -120°
Nozzle brush movement	8° / 60 rpm / 360°
Axis movements	6



**Putzmeister**



## Cable reel (optional)

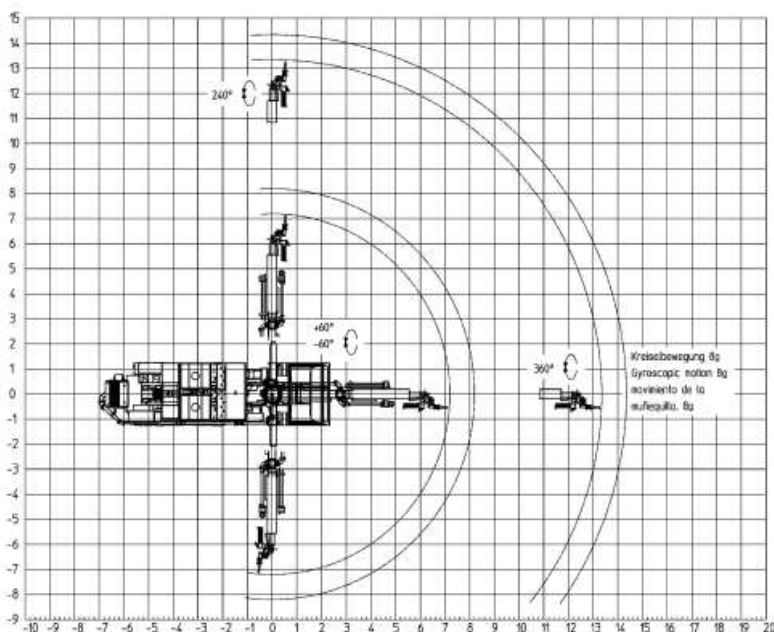
Collector	4 x 300 A
Diameter cable reel	1400 mm
Cable length	50 m / 100 m (optional)
Voltage	400 V / 50 Hz - 440 V / 60 Hz
Maximum pressure	140 bar
Drum speed	36 r.p.m.
Hydraulic motor output	50 l/min
Roll on/off	Hydraulic

## High pressure cleaner (optional)

Water pump	RK 15.20 H
Pump rotation	1450 r.p.m
Engine power	5,5 kW
Water pump hose	25 m
Conveying output / flow	15 l/min
Conveying max pressure	160 bar

## Air-Water-Additive system

<b>Projector AI220</b>	
Piping and hose for concrete	80 DN
<b>Additive pump AL 403.5</b>	
Motor output / power	1,1 Kw
Max working pressure / breakage	10,5/15 bar
Tank capacity	1000 l + (1000 l optional)
Conveying output / flow	30-700 l/h
Conveying pressure	0.75 Mpa
Control system	Electric



## More information

<b>Hydraulic system</b>	
Oil tank Type HLP 46	290 l
Max hydraulic pressure	210 bar
Suction filter	10 (microns)
<b>Cable remote control Ergonic</b>	
Cable length	25 m (32 pol)
<b>General switchboard</b>	
Power	145 Kw
Protection category	56 IP
Power supply frequency	50 Hz / 60 Hz
Voltage	3x400 V / 3x440 V
<b>Lights</b>	
Working spotlight	1 x 24 V / 70 W
Boom working spotlight - Xenon	2 x 24 V / 300 W



Tel: (+34) 914 288 100  
marketing@putzmeister.es - www.putzmeister.es/shotcrete

**Putzmeister**